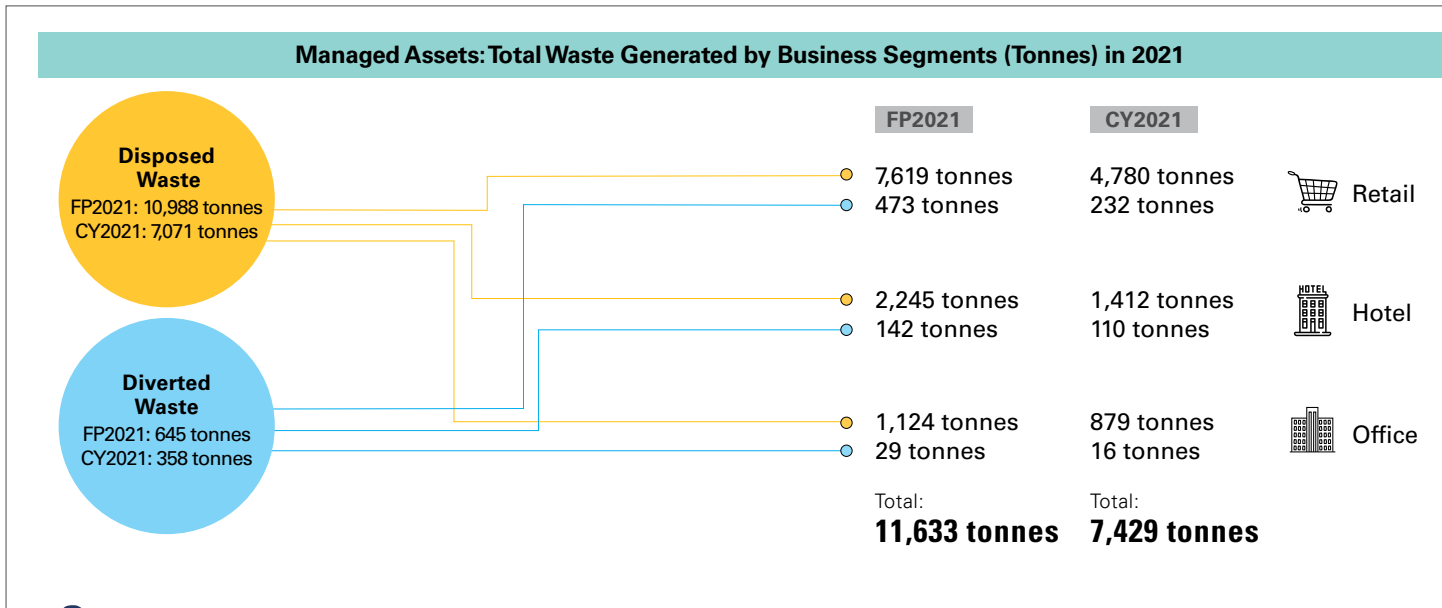


**GOAL 1:
TRANSFORMING OUR PORTFOLIOS
TO LOW-CARBON ASSETS**

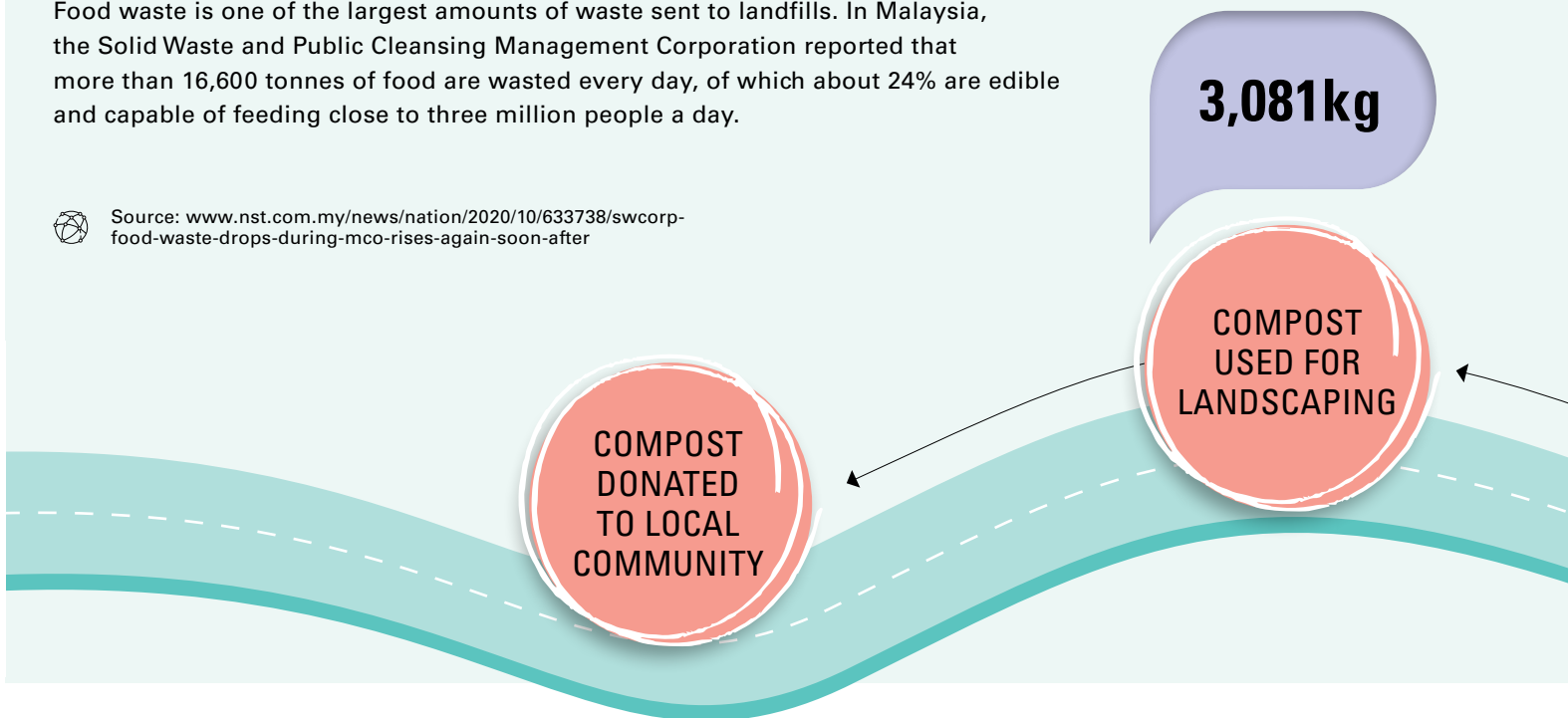


IMPACT STORY: SUNWAY REIT'S CIRCULAR ECONOMY

A circular economy takes place when the end-of-life of a product or a material is restored and turned into a useful resource that eliminates waste. Generating a circular economy will help to reduce waste and ultimately contribute to climate action.

Food waste is one of the largest amounts of waste sent to landfills. In Malaysia, the Solid Waste and Public Cleansing Management Corporation reported that more than 16,600 tonnes of food are wasted every day, of which about 24% are edible and capable of feeding close to three million people a day.

Source: www.nst.com.my/news/nation/2020/10/633738/swcorp-food-waste-drops-during-mco-rises-again-soon-after



**GOAL 1:
TRANSFORMING OUR PORTFOLIOS
TO LOW-CARBON ASSETS**

Breakdown of Waste Generated in FP2021

94%
Disposed Waste
10,988 tonnes

6%
Diverted Waste
645 tonnes

	Prevention	0.3 tonnes
	Reuse	69 tonnes
	Recycling	500 tonnes
	Recovery	75 tonnes

Amount of food waste collected
>60,000 kg

01 Sunway Pyramid Shopping Mall and Sunway Resort Hotel have each invested in a composting machine for the mall's tenants and the hotel's kitchens to compost their food waste.

Recognising food waste as one of the major problems that leads to waste, Sunway REIT has been actively converting food waste to energy or compost to reduce waste to landfills and generate a circular economy. Our circular economy starts with the collection of food waste from Sunway Pyramid Shopping Mall and Sunway Resort Hotel and used cooking oil from Sunway REIT hotels in Sunway City Kuala Lumpur.

To repurpose used cooking oil, Sunway REIT sells its used cooking oil to waste energy producer, FatHopes Energy. In FP2021 alone, more than 14,000 kg of used cooking oil was sold.

03 When the compost is produced, it is used as soil conditioner in Sunway City Kuala Lumpur's landscape to improve the quality of the soil. Some of the compost is also distributed to the local community and sold to a local landscaping company.

02

The collected food waste gets broken down in the composting machine, which is capable of decomposing all types of food.

Using controlled parameters, including temperature, agitation and airflow in an aerobic environment, the machine is able to convert all types of food into bio-organic compost within 24 hours. The food waste composting machine can reduce food waste volume by up to 80%.

